

A photograph of a modern multi-story building. The building features a mix of materials, including a glass facade on the left side and a light-colored stone or concrete facade on the right. A prominent feature is a glass-enclosed staircase tower that runs vertically along the left side of the building. The sky is clear and blue. The text is overlaid in a bold, orange, sans-serif font.

**ELECTROMECHANICAL DESIGNING
& SUPERVISING COMPANY
D. ATHANASEKOS - K. SAITIS**

INFORMATIVE ELEMENTS OF EXPERIENCE

COMPANY 'S BRIEF NOTE

The electromechanical design company **D. Athanasekos – K. Saitis** was founded in 2001 and joined in its frames the personal companies of its collaborators.

From its foundation the company occupied with designing and supervising electromechanical engineering to office buildings in Greece and abroad. The experience of its executives and the works that it has worked out, classify it as one of the most important companies in the branch with particular specialisation in designing high quality of projects, as computer centres of banking organisations and big office buildings.

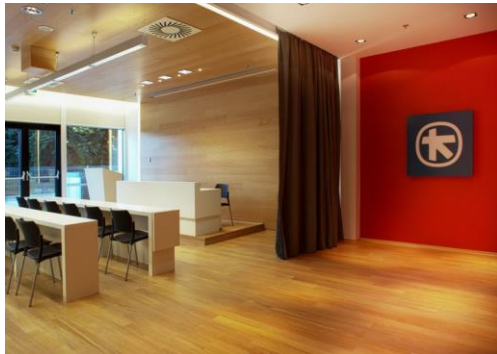
This is the reason that the company constitutes permanent design collaborator of bigger Banking Organisations of our country as ALPHA BANK and NATIONAL BANK of GREECE. Because of the drawn growth of Greek Banking Groups in Balkans, from 2005 the company has been also activated in this neurological space with growth of affiliated companies and undertaking similar works in countries such as Bulgaria, Romania, Serbia, FYROM, Albania with particular success as appearing by the present informative form of elements of experience.

At the same time in the sector of building manufacture of big Constructional Groups, our company has constant collaboration with GEK - TERNA, designing and supervising works that it manufactures in Greece and in Bulgaria. All the partners of our company deal actively with the development of designs and supervisions of electromechanical works that undertakes in harmonious collaboration with its permanent and complementary potential of collaborators. As result the final product of design team covers absolutely the requirements, certifying its very high potential in a wider region of specialities.

The year 2007 was completed the BIOCLIMATIC NEW OFFICE BUILDING of ALPHA BANK at 103, Athens Avenue. By the cooperation of our office with Tompazis Architect & Associates, designed and implemented a bioclimatic green building which became famous by the media and a guide for the construction of such projects, both of architecture and of engineering in terms.



The year 2014, the Central Office building of ALPHA BANK in Sofia, was awarded as the best business building in Bulgaria. Our office has designed and implemented the supervising, in collaboration with the architectural firm of Bulgaria ATELIE SERAFIMOV and Greek architectural office. VENERIS & Associates. The main building of the Bank Group's office in Sofia is one of the most complete in Bulgaria in electromechanical infrastructure.



Head office of Company

136 ALEXANDRAS AV. - 11471 - ATHENS
Tel: + 30 210 6839162 fax: + 30 210 6844894
email: info@asengineers.gr or dkn@otenet.gr
site: <http://www.asengineers.gr>

In the following pages you will find:

- CV 's of associates and cooperators
- Labor of company
- List of designs elaborated by the company

COMPANY'S COMMENDATION - CV 'S

A. PARTNERS

DIMITRIOS ATHANASEKOS

DATE OF BIRTH: 1957
STUDIES: ELECTRICAL ENGINEER (1982)
BUSINESS ACTIVITY:
COOPERATOR (1982 – 2000) OF KMP CO.

KONSTANTINOS SAITIS

DATE OF BIRTH: 1967
STUDIES: MECHANICAL ENGINEER (1993)
BUSINESS ACTIVITY:
COOPERATOR (1994 – 2001) OF KMP CO

B. COLLABORATORS

GEORGE MAKRIS

DATE OF BIRTH: 1978
STUDIES: MECHANICAL ENGINEER (2003)
MSc ALTERNATIVE ENERGY FORMS
BUSINESS ACTIVITY:
SINCE MARCH OF 2003 PERMANENT COOPERATOR OF THE COMPANY

PANTELIS ADAMOPOULOS

DATE OF BIRTH: 1978
STUDIES: MECHANICAL ENGINEER
BUSINESS ACTIVITY:
SINCE NOVEMBER OF 2007 PERMANENT COOPERATOR OF THE COMPANY

ANTONIOS IORDANIDIS

DATE OF BIRTH: 1983
STUDIES: ELECTRICAL ENGINEER
BUSINESS ACTIVITY:
SINCE SEPTEMBER OF 2010 PERMANENT COOPERATOR OF THE COMPANY

NIKOLAOS PATERAS

BIRTH YEAR: 1977
STUDIES: TECHNOLOGIST ENGINEER OF INDUSTRIAL DESIGNING
BUSINESS ACTIVITY:
SINCE NOVEMBER OF 2005 PERMANENT COOPERATOR OF THE COMPANY



COMPANY 'S EQUIPMENT

In company 's equipments are included:

A. COMPUTERS

- PC PENTIUM 4 , 3000 MHz, TEM 4
- PC PENTIUM 4 , 2200 MHz, TEM 1
- PC PENTIUM 4 , 2000 MHz, TEM 1
- PC PENTIUM 4 , 1700 MHz, TEM 1
- PC PENTIUM 4 , 1600 MHz, TEM 1
- PC INTEL i5 , 3100 MHz, TEM 2

B. PRINTERS

- PLOTTER HP-1050C SIZE A0 TEM 2
- LASER HP-1200 TEM 1
- PRINTER HP-5850 TEM 1
- PRINTER HP-5550 TEM 1
- PRINTER HP-960 18 PPS TEM 2
- PRINTER HP-930C 18 PPS TEM 1
- PHOTOCOPIER CANNON 6218 TEM1

C. SOFTWARE

- PRE – COST ACCOUNTING PROGRAM 4M-WINDOWS TEM 2
- CALCULATION PROGRAM ELECTROMECHANICAL INSTALATIONS 4M TEM 2
- WINDOWS 2000 PRO TEM 1
- WINDOWS XP PRO TEM 3
- WINDOWS 10 PRO TEM 2
- DESIGNING PROGRAM INTELICAD 4M TEM 6
- DESIGNING PROGRAM AUTOCAD TEM 3
- APPLICATION PROGRAM OFFICE TEM 5
- LIGHTING PROGRAM PHILIPS, PETRIDIS
- ELECTRICAL NETWORK CALCULATION PROGRAM ABB-SACE, MERLIN-GERIN, SIEMENS
- HYDRAULIC NETWORK CALCULATION PROGRAM WILO, ABS, TOUR-ANDERSON, TRANE
- BMS PROGRAMMES - AUTOMATION SAUTER

A. DATA CENTERS

Most important are:

IT (DATA) CENTER - NATIONAL BANK OF GREECE



ELECTROMECHANICAL DESIGN – TECHNICAL SUPPORT OF ELECTROMECHANICAL CONSTRUCTION

BUILDING AREA	30,000 m ²	
DATA CENTER AREA	2,000 m ²	
ENTRUSTING	2003	
ELECTROMECHANICAL BUDGET	8.500.000 €	(2003)

EXTENSION OF ALPHA BANK DISASTER SITE & ALPHA GROUP & CONVERSION TO MAIN DATA CENTER (ATTICA – MANTRA)





DESIGN - SUPERVISING OF ELECTROMECHANICAL ENGINEERING

INSTALLATIONS AREA 1.000 m²

DATA CENTER AREA 370 m²

ENTRUSTING 2010

ELECTROMECHANICAL BUDGET 2.200.000 € (2010)

UPGRADE OF EMPORIKI BANK IT CENTER and CONVERSION TO ALPHA BANK MAIN DATA CENTER

(HOLARGOS - ATHENS)





DESIGN - SUPERVISING OF ELECTROMECHANICAL ENGINEERING

AREA 820 m2

ENTRUSTING 2012- 2013

ELECTROMECHANICAL BUDGET 4.000.000 € (2013)

UPGRADE OF IONIKI & LAIKI BANK IT CENTER

(NAVARINOU STR. - PIRAEUS)

AS PARTNERS IN THE ELECTROMECHANICAL DESIGNING OFFICE KMP & PARTNERS

DESIGN - SUPERVISING OF ELECTROMECHANICAL ENGINEERING

BUILDING AREA 8,000 m²

DATA CENTER AREA 200 m²

ENTRUSTING 1999

ELECTROMECHANICAL BUDGET 300.000.000 drh. (1999)

IT CENTER ALPHA INSURANCE – OKEANOS BUILDING

(MICHALAKOPOULOU STR. - ATHENS)

DESIGN - SUPERVISING OF ELECTROMECHANICAL ENGINEERING

BUILDING AREA 15,000 m²

DATA CENTER AREA 200 m²

ENTRUSTING 2002

ELECTROMECHANICAL BUDGET 1.940.000 € (2002)

IT CENTER ALPHA BANK - KEPINSKI BUILDING - SOFIA BULGARIA



DESIGN - SUPERVISING OF ELECTROMECHANICAL ENGINEERING

DATA CENTER AREA 200 M²

ENTRUSTING 2008

ELECTROMECHANICAL BUDGET 250.000 € (2008)

**ALPHA BANK MAIN BUILDINGS ENERGY SUPPLY DESIGN STADIUO –
PANEPISTIMIOU AVE.**

ELECTROMECHANICAL BUDGET 1.500.000.€ (2000-2003)

IT CENTER GENIKI BANK

(ATHENS)

AS PARTNERS IN THE ELECTROMECHANICAL DESIGNING OFFICE KMP & PARTNERS

DESIGN - SUPERVISING OF ELECTROMECHANICAL ENGINEERING

BUILDING AREA 17,000 m²

DATA CENTER AREA 500 m²

ENTRUSTING 2000

ELECTROMECHANICAL BUDGET 1.500.000.000 Drh. (2000)

IT CENTER ALPHA BANK - NEW HEADQUARTERS - SOFIA BULGARIA

DESIGN - SUPERVISING OF ELECTROMECHANICAL ENGINEERING

BUILDING AREA 12,000 m²

DATA CENTER AREA 100 m²

ENTRUSTING 2009-2012

ELECTROMECHANICAL BUDGET 5.000.000 € (2009)

IT CENTER ALPHA BANK 41 PANEPISTIMIOU AVENUE - NIKOLOUDI

AS PARTNERS IN THE ELECTROMECHANICAL DESIGNING OFFICE KMP & PARTNERS

DESIGN - SUPERVISING OF ELECTROMECHANICAL ENGINEERING

BUILDING AREA 6,000 m²

DATA CENTER AREA 90 M²

ENTRUSTING 1999

ELECTROMECHANICAL BUDGET 650.000.000 Drh. (1999)

IT CENTER FORTHNET – NOVA GROUP

DESIGN - SUPERVISING OF ELECTROMECHANICAL ENGINEERING

BUILDING AREA	2,500 m ²		
DATA CENTER AREA	355 M2		
ENTRUSTING	2016 -		
ELECTROMECHANICAL BUDGET	630.000 €		(2016)

DATA CENTER FIRST DATA

DESIGN - SUPERVISING OF ELECTROMECHANICAL ENGINEERING

BUILDING AREA	8,500 m ²		
DATA CENTER AREA	330 M2		
ENTRUSTING	2016 -		
ELECTROMECHANICAL BUDGET	900.000 €		(2016)

DATA CENTER TITAN





DESIGN - SUPERVISING OF ELECTROMECHANICAL ENGINEERING

DATA CENTER AREA 40 m2

ENTRUSTING 2016 -

ELECTROMECHANICAL BUDGET 150.000 € (2016)

NEW ALPHA BANK DISASTER SITE CYPRUS





DESIGN - SUPERVISING OF ELECTROMECHANICAL ENGINEERING
DATA CENTER AREA 150 m2
ENTRUSTING 2018
ELECTROMECHANICAL BUDGET 300.000 € (2018)

B. OFFICE BUILDINGS

Most important are:

EKTONON BUILDING – TERNA SA L. ATHINON AVE. & SP. PATSI



DESIGN - SUPERVISING OF ELECTROMECHANICAL ENGINEERING

AREA 17000 m²

ENTRUSTING 2003

ELECTROMECHANICAL BUDGET 3.500.000 € (2003)

VIOS / TERNA BUILDING - MESOGEION AVE

MINISTRY OF DEVELOPMENT



DESIGN - SUPERVISING OF ELECTROMECHANICAL ENGINEERING

AREA 17000 m²

ENTRUSTING 2001

ELECTROMECHANICAL BUDGET 3.230.000 € (2001)

NEW HEADQUARTERS OF ALPHA BANK - SOFIA BULGARIA



DESIGN - SUPERVISING OF ELECTROMECHANICAL ENGINEERING (ATHANASEKOS – SAITIS BG LTD)

AREA 12.000M²

ENTRUSTMENT 2008

ELECTROMECHANICAL BUDGET 5.000.000 € (2008)

PROFIN BUILDING OF NAOUSA SPINNING MILLS ASSOCIATION

DESIGN - SUPERVISING OF ELECTROMECHANICAL ENGINEERING

AREA	10000 m ²	
ENTRUSTING	2002	
ELECTROMECHANICAL BUDGET	3.300.000 €	(2002)

VAMBAS MEDICAL BUILDING

DESIGN - SUPERVISING OF ELECTROMECHANICAL ENGINEERING

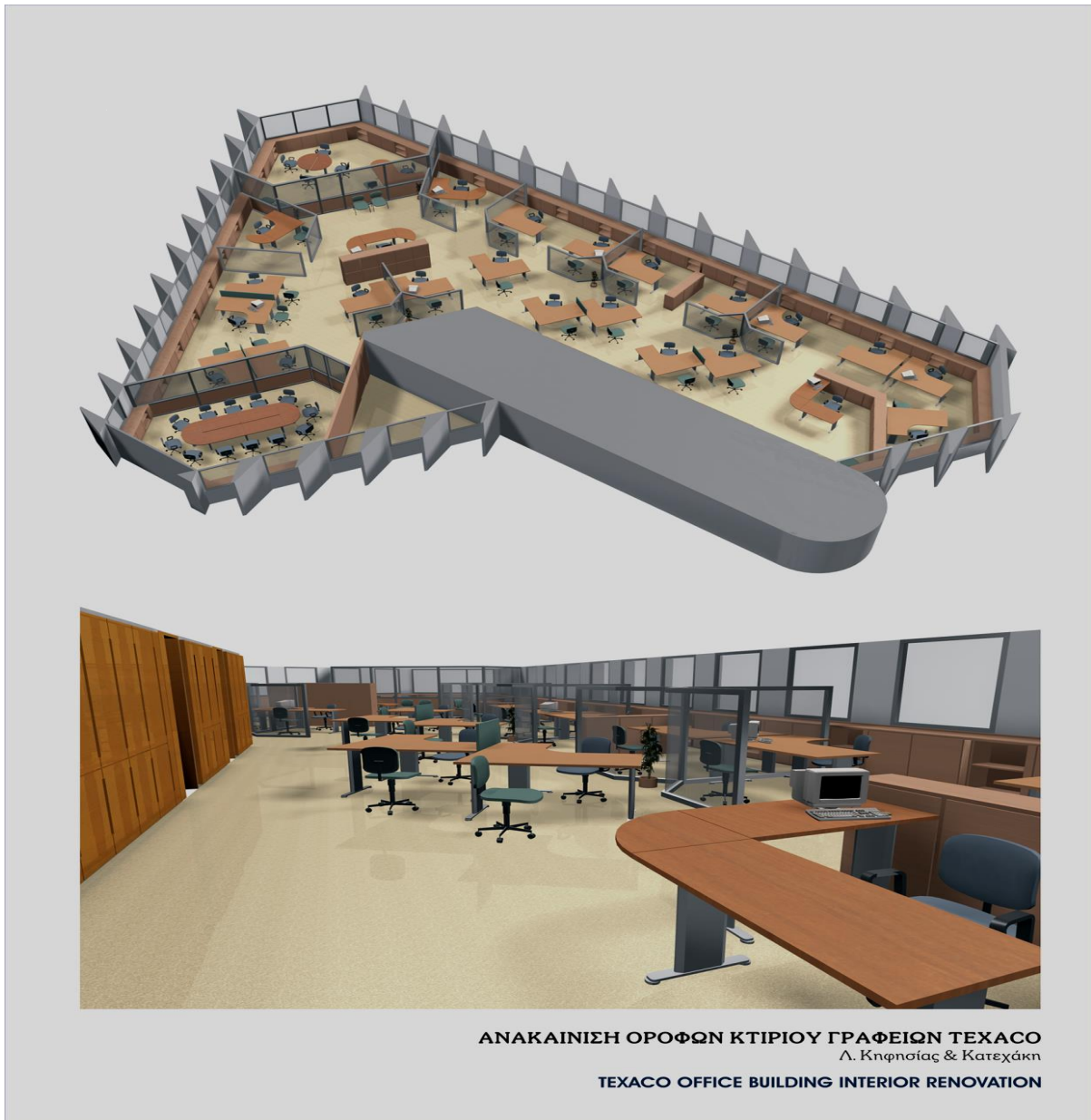
AREA	4000m ²	
ENTRUSTING	2004	
ELECTROMECHANICAL BUDGET	500.000 €	(2004)

OFFICE BUILDING KTISTOR (REAL ESTATE)

DESIGN - SUPERVISING OF ELECTROMECHANICAL ENGINEERING

AREA	3000m ²	
ELECTROMECHANICAL BUDGET:	600.000 €	(2003)

TEXACO - GIANNOUSIS BUILDING - KIFISIAS & KATEHAKI AVE.



DESIGN - SUPERVISING OF ELECTROMECHANICAL ENGINEERING

AREA 1000m²

ENTRUSTING 2002

ELECTROMECHANICAL BUDGET 290.000 € (2002)

LYMPERIS PUBLICATIONS - OFFICE BUILDING IN KOROI



DESIGN - SUPERVISING OF ELECTROMECHANICAL ENGINEERING

AREA 1.500m²

ENTRUSTING 2006

ELECTROMECHANICAL BUDGET: 400.000 € (2006)

NEW OFFICE BUILDING YDROGEIOS INSURANCE COMPANY- SIGROU AVE.



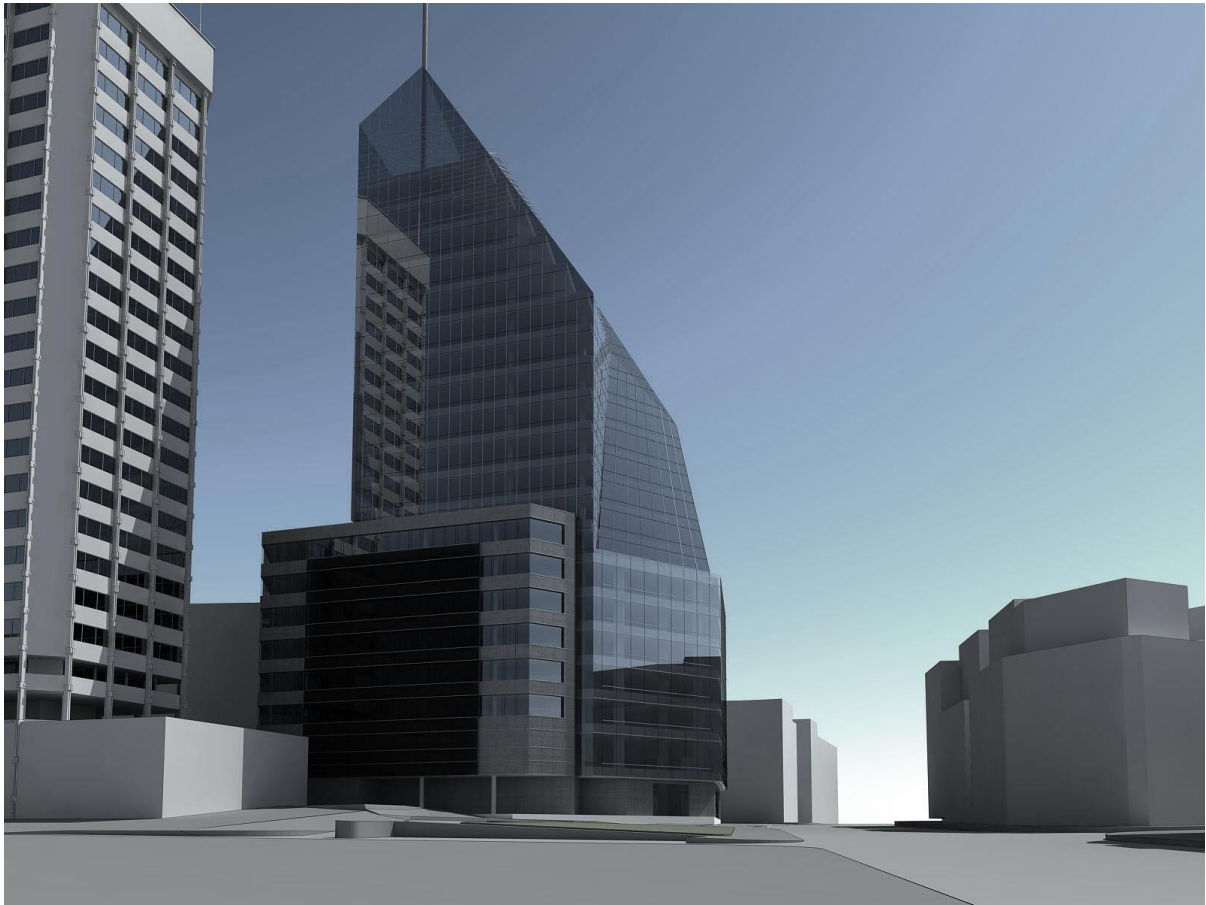
DESIGN - SUPERVISING OF ELECTROMECHANICAL ENGINEERING

AREA 12.500M²

ENTRUSTMENT 2007

ELECTROMECHANICAL BUDGET: 1.600.000,00 € (2007)

OFFICE BUILDING - MACEDONIA TOWER - ICON/TERNA - SOFIA BULGARIA



PROJECT'S ELECTROMECHANICAL INSTALLATION CONSULTANTS (ATHANASEKOS – SAITIS BG LTD)

AREA	56.000M ²	
ENTRUSTING	2008	
ELECTROMECHANICAL BUDGET:	16.500.000 €	(2008)

NEW OFFICE BUILDING OF EASTERN MEDITERRANEAN MARITIME IN GLYFADA



DESIGN - SUPERVISING OF ELECTROMECHANICAL ENGINEERING

AREA 4.500M²

ENTRUSTING 2009

ELECTROMECHANICAL BUDGET: 1.500.000 € (2010)

C. OFFICE BUILDINGS

Company Cooperation D. Athanasekos – K. Saitis (50%) & I. Printatko (50%)
Most important are:

ALPHA BANK MAIN BUILDING FORMER LAIKI BANK



ELECTROMECHANICAL DESIGN – TECHNICAL SUPPORT OF ELECTROMECHANICAL CONSTRUCTION

AREA	6,500 m ²
ENTRUSTING	2005
ELECTROMECHANICAL BUDGET	1.500.000 €

NEW OFFICE BUILDING OF ALPHA BANK - 103 ATHINON AVE.



ELECTROMECHANICAL DESIGN – TECHNICAL SUPPORT OF ELECTROMECHANICAL CONSTRUCTION

AREA 14.000 M²

ENTRUSTING 2006

ELECTROMECHANICAL BUDGET 4.000.000 € (2006)

MUSEUM OF CURRENCIES ALPHA BANK - CORFU



DESIGN - SUPERVISING OF ELECTROMECHANICAL ENGINEERING

AREA 800m²

ENTRUSTING 2003

ELECTROMECHANICAL BUDGET 250.000 € (2003)

AG. STEFANOS BUILDING BLOCK RENOVATION ALPHA BANK



DESIGN - SUPERVISING OF ELECTROMECHANICAL ENGINEERING

AREA 30.000M²

ENTRUSTING 2009

ELECTROMECHANICAL BUDGET: 2,000,000,00 € (2009)

D. OTHER OFFICE BUILDINGS

I.Printatko in collaboration with D. Athanasekos – K. Saitis
Most important are:

BANK OF GREECE - MAIN BUILDING IN PANEPISTIMIOU AVE.

BUILDING SECURITY INSTALLATION DESIGN

AREA	20.000 m ²		
ENTRUSTING	2000		
ELECTROMECHANICAL BUDGET	3.000.000 €		(2000)

BANK OF GREECE - MAIN BUILDING IN PIRAEUS

BUILDING SECURITY INSTALLATION DESIGN

AREA	20000 m ²		
ENTRUSTING	2000		
ELECTROMECHANICAL BUDGET	6.000.000 €		(2000)

GENIKI BANK OF GREECE - NEW MAIN MANAGEMENT BUILDING MESOGION AVE.

DESIGN - SUPERVISING OF ELECTROMECHANICAL ENGINEERING OFFICE BUILDING & IT (DATA) CENTER

AREA	17000 m ²		
ENTRUSTING	DECEMBER 2000		
ELECTROMECHANICAL BUDGET	4.500.000. €		(2000)

ALPHA BANK – OFFICE BUILDING 43 PANEPISTIMIOU AVE

DESIGN - SUPERVISING OF ELECTROMECHANICAL ENGINEERING

AREA	7000 m ²		
ELECTROMECHANICAL BUDGET	880.000 €		(1996)

ALPHA BANK – OFFICE BUILDING 41 PANEPISTIMIOU AVE

DESIGN - SUPERVISING OF ELECTROMECHANICAL ENGINEERING

AREA	6000 m ²		
ELECTROMECHANICAL BUDGET	1.900.000 €		(1999)

MAIN BUILDING ALPHA BANK 45 PANEPISTIMIOU AVE & PESMATZOGLOU (IONIKI BANK)

DESIGN - SUPERVISING OF ELECTROMECHANICAL ENGINEERING

AREA 5000 m²
ELECTROMECHANICAL BUDGET 1.800.000 € (2001)

ALPHA BANK – MAIN BUILDING IN PIRAEUS

DESIGN - SUPERVISING OF ELECTROMECHANICAL ENGINEERING – BUILDING RENOVATION

AREA 8000 m²
ELECTROMECHANICAL BUDGET 880.000 € (1999)

DOXIADIS OFFICE BUILDING ELECTROMECHANICAL SUPERVISION RENOVATION OF IT SECTION

AREA 5000 m²
ELECTROMECHANICAL BUDGET 1.500.000 € (1999)

ALPHA INSURANCE MONUMENTAL BUILDING VOVOS

DESIGN - SUPERVISING OF ELECTROMECHANICAL ENGINEERING

AREA 5000 m²
ELECTROMECHANICAL BUDGET 440.000 € (1998)

ALPHA FINANCE - MAIN BUILDING

DESIGN - SUPERVISING OF ELECTROMECHANICAL ENGINEERING

AREA 6000 m²
ELECTROMECHANICAL BUDGET 1.100.000 € (1999)

ALPHA LEASING - MAIN BUILDING

DESIGN - SUPERVISING OF ELECTROMECHANICAL ENGINEERING

AREA 4000 m²
ELECTROMECHANICAL BUDGET 730.000 € (1999)

ALPHA BANK - MAIN BUILDING IN LARISA

DESIGN - SUPERVISING OF ELECTROMECHANICAL ENGINEERING – BUILDING 'S RENOVATION

AREA 4000 m²
ELECTROMECHANICAL BUDGET 580.000 € (1997)

ALPHA BANK - MAIN BUILDING IN VOLOS

DESIGN - SUPERVISING OF ELECTROMECHANICAL ENGINEERING

AREA 4000 m²
ELECTROMECHANICAL BUDGET 580.000 € (1999)

ALPHA BANK - MAIN CREDIT CARDS BUILDING

DESIGN - SUPERVISING OF ELECTROMECHANICAL ENGINEERING

AREA 3000 m²
ELECTROMECHANICAL BUDGET 580.000 € (1998)

ALPHA BANK - MAIN BUILDING AT ETHNIKIS ANTISTASEOS AVE - PIRAEUS

DESIGN - SUPERVISING OF ELECTROMECHANICAL ENGINEERING AT BUILDING 'S RENOVATION

AREA 3000 m²
ELECTROMECHANICAL BUDGET 580.000 € (1998)

ALPHA BANK - MARINE BRANCH BUILDING IN PIRAEUS

DESIGN - SUPERVISING OF ELECTROMECHANICAL ENGINEERING AT BUILDING 'S RENOVATION

AREA 1500 m²
ELECTROMECHANICAL BUDGET 440.000 € (1997)

ALPHA BANK - STAFF UNION OFFICE BUILDING - IPPOKRATOUS STR

DESIGN - SUPERVISING OF ELECTROMECHANICAL ENGINEERING AT BUILDING 'S RENOVATION

AREA 4000 m²
ELECTROMECHANICAL BUDGET 440.000 € (2001)

ALPHA BANK - MAIN BUILDING IN TIRANA

DESIGN - SUPERVISING OF ELECTROMECHANICAL ENGINEERING

AREA 2000 m²

ELECTROMECHANICAL BUDGET 1.100.000 € (1998)

ALPHA BANK - SUPPORT CENTERS PIRAEUS - PATRA - KERKIRA - LARISA - CRETE

MAJOR HELLENISM CONSTITUTION – OFFICE BUILDING

ELECTROMECHANICAL BUDGET: 580.000 € (1998)

MAJOR HELLENISM CONSTITUTION – MULTIPLE USE BUILDING

ELECTROMECHANICAL BUDGET: 1.100.000 € (1999)

NEW OFFICES OF NATIONAL LYRIC SCENE

DESIGN - SUPERVISING OF ELECTROMECHANICAL ENGINEERING

ELECTROMECHANICAL BUDGET: 140.000,00€ (2008)

E. BANK BRANCHES STORES

Company Cooperation D. Athanasekos – K. Saitis (50%) & I.Printatko (50%)

Most important are:

ALPHA BANK BRANCHES (GREECE FROM 2001 AND THEN)

- LAMPRINI – METAMORFOSI – AEDAK SIGROU 137 – MELISSIA – KIFISIA – DAFNI – N. IRAKLIO
AMPELOKIPI – PIRAEUS – P. FALIRO – PEFKI - N. ERITHREA – METAMORFOSI - KIPARISIA –
KALAMATA – LAMIA – MEGARA – TRIKALA – KOZANI – RETHIMNO – KATERINI – KALAMARIA –
KOZANI – KERKIRA – KOS – AGRINIO – BANK PAPER MUSEUM IN KERKIRA – STAUROUPOLI
EGNATIAS IN THESSALONIKI – PSIHIKO – KAROLOS STR. IN PATRA – ROUSVELT –
PALAIOKASTRITSA – SPATA – AGRINIO – DRAPETSONA – MERLIN – SOFOULI – ERMOU –
KAPNIKAREA – AG. IOANNI RENTI – THIVON str – MOLOKOTOU – MERLIN OFFICES – FLORIDA
CENTER – PAPAPEIO – HRAKLEIO – MENEMENI – XENIA – EGNATIA – AG. STEFANOS TRAINING
CENTER – MOLOKOTOY – IOANNINA – ALEXANDROUPOLI – PRIVATE BANK THESSALONIKA –
BUSINESS CENTER PATRA – KNOSSOS – BUSINESS CENTER KAVALA – BUSINESS CENTER
LARISA – MASTAMPA – ARGIROUPOLI – PRIVATE BANK KAVALA – BUSINESS CENTER AG.
PARASKEYHS – LOUTRAKI – KORINTHOS – IOANNINA II – LARISA – AG. IOANNIS – HALANDRI –
SKALA LAKONIAS – PLATANIAS – THASOS – SIDIROKASTRO – MAIN BUILDING KAVALA – PORTO
RAFTI – AG. THEODOROI - ELEYTHEROUPOLI – SYKIES – RETHIMNO – N. MIHANIONA – AG.
STEFANOS – KOUFALIA – EVRIALI – HIOS – MYKONOS – DIOGENIS – PILOS – PAANIA – N. PENTELI
– KALAMATA – RETHUMNO – IT CENTER MANDRA – PL. AMERIKIS – HIOS – SOFOULI – ERIKOS
DYNAN – IERAPETRA – XANTHI 1 – XANTHI 2.).
- **BRANCHES IN SERBIA** (MAIN IN BELGRADE – MAKENZIEVA – SUPERVERO – PALANKA –
NOVISAD – MAKEDONSKA 12,14 – ZLATIBOR – VALIEVO – LAZAREVAC – ZEMUN – BANOVO –
CACAK – MARKOVITSA – CRVENKA – POZAREVAC – SID – RUMA – OBRENOVAC – NIS – VRBAS –
SENJAK – KRALJEVO – SARAJEVSKA – TEMERIN – RESNIC – SIMANOVCI – ARANDJELOVAC – NIS
III – KANAREVO BRDO – NOVA PAZOVA – ADA – BARAJEVO – KOVIN – KRANJA MILANA 11 –
ALEKSINAC – VISNJKA BANJA – SRBOBRAN – RAKOVICA – SUBOTICA – ALTINA – TOPOLA – NIS 4 –
SOPOT – NOVISAD – KOCO RACIN – NIS CENTRAL - LESKOVAC)
- **BRANCHES IN BULGARIA** (MAIN IN SOFIA – VARNA – FILIPOUPOLI – STARA ZAGORA – LEFSKI –
LIULIN – RUCE – VELIKO TARNAVO – HASKOVO – BURGAS – PLEVEN – SEVLIEVO – PERNIK –
SILISTRA – TURGOVISHTA – DOBRITCH – STABOLINSKI - VRATSA – DUBNICA – JABOL –

MONTANA – LOVECH – KAZANLUK – SOFIA CITY CENTER – OBORISHTE – PAZARDZIK – SEBLIEVO – PLEVEN – DONDUKOV – KURJALI – GABROVO – IZTOK – BANSKO – NESEMBER – SUNNY BEACH – RAZGRAD – PETRITS – IVAN VASOF – SUMEN – BANISHORA – KARLOVO – PLOVDIV 2 – BOTEVGRAD – OVCA KUPEL – DIMITROVGRAD – SADENSKI – SAMOKOV – ASSENOVGRAD – PLOVDIV 3 – RUSE 2 – SVISHTOV – VARNA 2 – CHERNI VRAH – INTRACOM STOCKROOM – CBS SOFIA – SIMEONOVSKO SHOSSE – PLOVDIV 4 – PLOVDIV 5 – PIROGOV – ILINDEN – VARNA 3 – AITOS – KIUSTENDIL – LOM – ALEXANDER DIAKOVIC – KONSTANTIN VELICHKOV – SCOBELEV PARK – NADEZDA – KEPINSKI – GORCHE DELCHEV – BOROVO – LOZENECH – KEPINSKI IT CENTER – ORIAHOVO – MEDICHINSKA ACADEMIA – TZAR OSVOBODITEL – RENAISSANCE – TZAR PETAR – PESHTERA – PLOVDIV 7 – PFOHEMALL – PLOVDIV 6 – MANASTIRSKI LIVADI – IZGREV – RUSE II – KOZLODUI – DARVENICA – EUROPA – VELINGRAD – SPARTAC – PLOVDIV 1 DISASTER – GORNA ORIAHOVITSA – DOBRITCH 2 – KONSTENSKI VODOPAD – YABOL 2 – RUSE III – MLADOST – VARNA 6 – BELENE – IZTOK 2 – GABROVO 2 – GEO MILEV – BURGAS 3 – SUMEN 2 – PLOVDIV 8 – PLEVEN 3 – PROVADIA – POPOVO – BURGAS 4 – SOZOPOL – HARMANLY – SLIEVEN 2 – KARNOBAT – RADNEVO – RUSSE 4 – RUSSE 5- NOVA ZAGORA – STARA ZAGORA 2 – LEVSKI – PLOVDIV 10 – DRUZBA – VARNA 9 – TZAR SIMEON – SKOBELEV – CHIRPAN – TODOR KABLESHKOV – BLAGOEVGRAD 2 – VELIKO TURNAVO 2 – VARNA 12 – BANKYA – RAKOVSKI – VARNA 10 – VARNA 11 – VARNA 13 – STUDENSKI GRAD – KAVARNA – BURGAS 5 – MLADOST 4 – PLOVDIV 9 – BOURGAS 6 -- CARREFOUR) - RAKOVSKI – VITOSHA.

- **BRANCHES IN ALBANIA** (MAIN IN TIRANA – FIERI – KAKAVIA – AVLONA – ARGIROKASTRO – ELBASSAN – TIRANA II – TIRANA III).
- **BRANCHES IN SKOPIJA** SUPERVISE MAIN BRANCHES IN SKOPIA – KAVADARCI– PRILEP – OCHRID – GOSTIVAR – VELES – LEPTOKARJA – STUGA – AERODROM – CAIR – OCHRID DISASTER – KISELA VODA – PIROT – KICEVO – KUMANOVO - NEGOTINO – TETOVO – STR. MACEDONIA – KIELA VODA 2 – KAPISTEC – PELAGONIA – IZKRA – MAIN OFFICE.
- **MARATHON MUSEUM (SPONSORING BY ALPHA BANK IN OLYMPIC GAMES OF 2004)**
- **OLYMPIC BRANCHES STORES OF ALPHA BANK**

NATIONAL BANK OF GREECE BRANCHES

- KOLONOS – RENTI – KIPSELI – PATISIA – AKTI MIAOULI – ANTHOUPOLI – PALINI – TAVROS – BUILDING IN AIOLOU str – KALAMATA – MESSINI – ARISTOMENOUS PLAZA IN KALAMATA – EGIRA – NEOHORI – KORINTHIA – IRAKIO CRETE – SMIRNI IN IRAKLIO – DIMOKRATIAS AVE. IN IRAKLIO – HANIA IN CRETE – SANTORINI – MAIN BUILDING IN HALKIDA – PTOLEMAIDA – KAZANI – AMINTEO – MAIN BUILDING IN LAMIA – SIRIPOULOS IN LAMIA – FILIPOUPOLI IN LARISA – MOLOS – AG. TRIADA – EVOSMOS – ANTIGONIDON – FLEMING – KALAMARIA – MPOTSARI – MAIN BUILDING G. STAUROU – ARGYROUPOLIS – HALKIDONA – FORMIONOS – KRYA VRISI – FARKAINA XIOS – KERATSINI – N. ERYTHRAIA – LARISA – AHARNES – ELEFSINA – GLIFADA – DAFNI – ELEYSINA – AG. DIMITRIOS – AIGALEO – BOYKOYRESTIOY – KASTELLA – ANOIXI – PSYHIKO – TRIKALA – KARDITSA – LARISA – KOLONOS – N. IONIA – AKADIMIAS – KALAMATA – MAROUSI – LARISA 2 – SPARTI – L. ATHINWN – SALAMINA – VIRONAS – KIFISIAS – AMALIADA – MESOGEION – ALIMOS – NAYPLIO, PIKERMI, NEOS KOSMOS, PLOMARI.
- MAIN BRANCH NBG IN TIRANA – AVLONA – DIBRA – ELBASSAN - KOMUNA E PARISIT - SHKOZET.
- MANAGEMENT BRANCH IN BELGRADE – PUPINA BELGRADE – BATANICA – FRANCUSKA – VOIVODE STEPE – VOIVODE MISICA – IT MISICA.

FBB BRANCHES

- KERKIRA – GLIFADA – IRAKLIO IN CRETE – THESSALONIKI – AMAROUSIO

EMPORIKI BANK

- ATHINON 78 AVE. BRANCH – TAVROS – COUNCIL HALL IN THE MAIN BUILDING – LEVADIA – PAGRATI - NEAPOLI
- **BRANCHES IN BULGARIA:** SOFIA BRANCH – BULGARIA BULEVARD – BURGAS – LIULIN – BUSINESS PARK – RUSE – VIDIN – CHRISTO BOTEV – PLEVEN – BANSKO – SPARTAK – OVCA KUPEL – VELIKO TURNAVO – STARA ZAGORA – MLADOST – SADANSKI – VRATSA – PLOVDIV – SCOBELEV – BLOGOEVGRAD – BURGAS – DONDUKOV – STABOLINSKI – SEVLIEVO – SHIPCHENSKI – DOBRITCH – LOVETCH – GABROVO – TZUM – DRUZBA - GOURKO
- **BRANCHES IN ALBANIA:** AG. SARANTA – TWIN TOWERS – BAJRAM CURRI – USLUGA – FIERI – COMBINAT – DIRAXIO – RRUGA BARDHIL – KAKAVIA – ARGYROKASTRO – ELBASAN – LIVADHA – KOMUNA E PARISIT – KORCE – LEZHE – ALI DEMI - SHENGJINI - SHKODRA – LUSNIE

F. INDUSTRIAL BUILDINGS

Most important are:

OFFICE BUILDING AND NEWPHARM STOCKROOMS - LAVIPHARM

DESIGN - SUPERVISING OF ELECTROMECHANICAL ENGINEERING

AREA 5000m²

ELECTROMECHANICAL BUDGET: 735.000 € (2001)

MARBLE ELABORATION UNIT "THASOS MARBLE"

ELECTROMECHANICAL DESIGN

ELECTROMECHANICAL BUDGET: 290.000 € (2002)

MAIN AIRPORT OF ATHENS - ELEFThERIOS VENIZELOS

NEW CHARTER FIGHT – QUARANTINE BUILDING

ELECTROMECHANICAL DESIGN

ELECTROMECHANICAL BUDGET: 200.000 € (2004)

NEFROIATRIKI

DESIGN - SUPERVISING OF ELECTROMECHANICAL ENGINEERING

ELECTROMECHANICAL BUDGET: 230.000 € (2007)

NEFROS N. IONIA

DESIGN - SUPERVISING OF ELECTROMECHANICAL ENGINEERING

ELECTROMECHANICAL BUDGET: 340.000 € (2009)

NEW OFFICE BUILDING YDROGEIOS INSURANCE (TRIPOLIS)

DESIGN - SUPERVISING OF ELECTROMECHANICAL ENGINEERING

ELECTROMECHANICAL BUDGET: 500.000 € (2010)

BUILDING HOSTING PERSONS REQUESTING ASYLUM AT SKARAMAGA

DESIGN OF ELECTROMECHANICAL ENGINEERING

ELECTROMECHANICAL BUDGET: 750.000 € (2013)

H&M STORE AT VELIKO TARNOVO BULGARIA

DESIGN - SUPERVISING OF ELECTROMECHANICAL ENGINEERING

ELECTROMECHANICAL BUDGET: 350.000 € (2014)

NEFROIATRIKI II

DESIGN - SUPERVISING OF ELECTROMECHANICAL ENGINEERING

ELECTROMECHANICAL BUDGET: 400.000 € (2016)



NEFROIATRIKI III

DESIGN - SUPERVISING OF ELECTROMECHANICAL ENGINEERING

ELECTROMECHANICAL BUDGET: 300.000 € (2018)



MARBLE ELABORATION UNIT "MARMARA ATHINON"

ELECTROMECHANICAL DESIGN

ELECTROMECHANICAL BUDGET: 180.000 € (2016)

G. HOTELS

Most important are:

HOTEL “THEOXENIA” IN KIFISIA



BUILDING RENOVATION 'S ELECTROMECHANICAL DESIGN AND SUPERVISION

ELECTROMECHANICAL BUDGET: 765.000 €

SURVEILLANCE (D. ATHANASEKOS – K. SAITIS)

ELECTROMECHANICAL DESIGN 1998 - CONSTRUCTION 1999 – 2001

HOTEL “THEOXENIA PALLAS” IN PIRAEUS



ELECTROMECHANICAL DESIGN AND SUPERVISION

ELECTROMECHANICAL BUDGET: 2.000.000 € (2004)

NEW HOTEL “THEOXENIA HOUSE”



ELECTROMECHANICAL DESIGN AND SUPERVISION

ELECTROMECHANICAL BUDGET: 300.000 € (2001)

HILTON HOTEL OF ATHENS

In years 2015, 2016 and 2017 our office successfully completed the provision of TECHNICAL CONSULTANT services to IONIKI HOTEL ENTERPRISES SA under the ownership of which HILTON Hotel of Athens operated.

H. RESIDENCE BUILDINGS

Most important are:

Residence: Sarantopoulos in Psihiko (2000-2001)

Residence: H.Lanara in Psihiko (2000-2001)

Residence: A. Lanara in Psihiko (2000-2001)

Residence: N. Laimos in Athens (2001)

Residence: K. Vouterakou in Ekali (2001)

Residence Multiplex: Avrantini in Pireus (2002)

Residence: Varagkis in Filothei (2002)

Residence: Martini in Rafina (2003)

Residence: Oikonomou – Drouza in Athens (2003)

Residence: Sossidis in Florina (2003)

Residence: Kuriakopoulou in Milos (2003)

Residence: Lanara in Porto Heli (2004)

Residence: Vozenberg in Varnavas (2005)

Residence: Giannoukos in Ekali (2006)

Residence: E. Malamou in Kifisia (2009)

Residence: G. Stathopoulou in Psihiko (2009)

Residence: D. Fafaliou in Kifisia (2010)

ATHENS AUG 2019